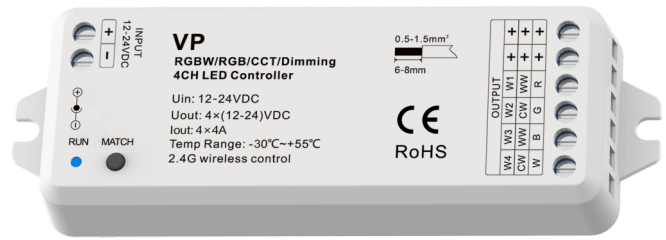


RGBW/RGB/CCT/Dimming 4 Channel LED RF Controller

- DC socket or wiring screw terminal power input and 4 channel constant voltage output.
- Match with RF 2.4G single zone or multiple zone single color, dual color and RGB/RGBW remote control.
- One RF controller accept up to 10 remote control.
- 4096 levels 0-100% dimming smoothly without any flash.
- When using with RGB/RGBW light, built in 10 dynamic mode, include jump or gradual change style.
- Auto-transmitting function: Controller automatically transmit signal to another controller with 30m control distance.
- Synchronize on multiple number of controllers.
- Light on/off fade time 3s selectable.

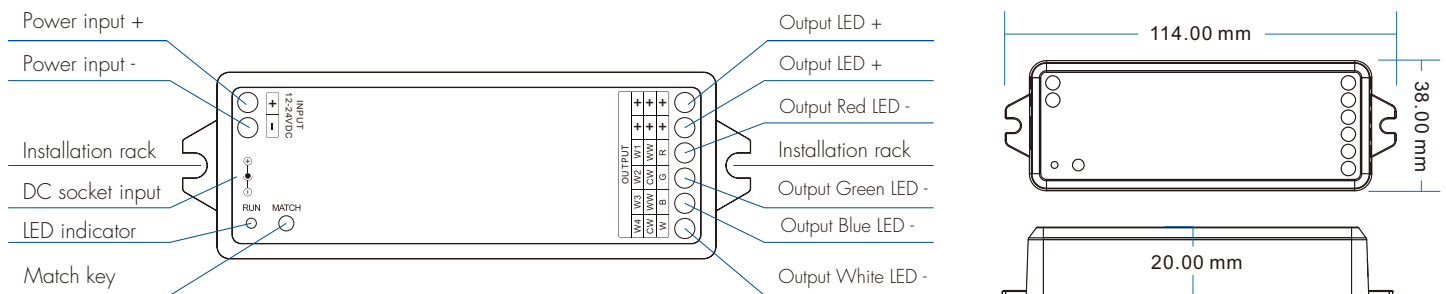


FC CE RoHS RED

Technical Parameters

Input and Output		Dimming data		Safety and EMC	
Input voltage	12-24VDC	Input signal	RF 2.4GHz	EMC standard	ETSI EN 301 489-1 V2.2.3 ETSI EN 301 489-17 V3.2.4
Input current	16.5A	Control distance	30m(Barrier-free space)	Safety standard	EN 61348-1:2015+A1:2021 EN 61348-2-13:2014+A1:2017
Output voltage	4 x (12-24)VDC	Dimming gray scale	4096 (2 ¹²) levels	Radio Equipment	ETSI EN 300 328 V2.2.2
Output current	4CH, 4A/CH, Max 6A	Dimming range	0 - 100%	Certification	CE RED
Output power	4 x (48-96)W	Dimming curve	Logarithmic	Warranty and Protection	
Output type	Constant voltage	PWM frequency	1000Hz (default)	Warranty	5 years
Package		Environment		Protection	Reverse polarity Short circuit
Size	L120 x W43 x H27mm	Operation temperature	Ta: -30 °C ~ +55 °C		
Gross weight	0.066kg	Case temperature (Max.)	Tc: +85 °C		

Mechanical Structures and Installations



Match Remote Control (two match ways)

End user can choose the suitable match/delete ways. Two options are offered for selection:

Use the controller's Match key

Match:
Short press match key, immediately press on/off key (single zone remote) or zone key (multiple zone remote) on the remote.
The LED indicator fast flash a few times means match is successful.

Delete:
Press and hold match key for 5s to delete all match, the LED indicator fast flash a few times means all matched remotes were deleted.

Use Power Restart

Match:
Switch off the power of the receiver, then switch on power, repeat again. Immediately short press on/off key (single zone remote) or zone key (multiple one remote) 3 times on the remote.
The light blinks 3 times means match is successful.

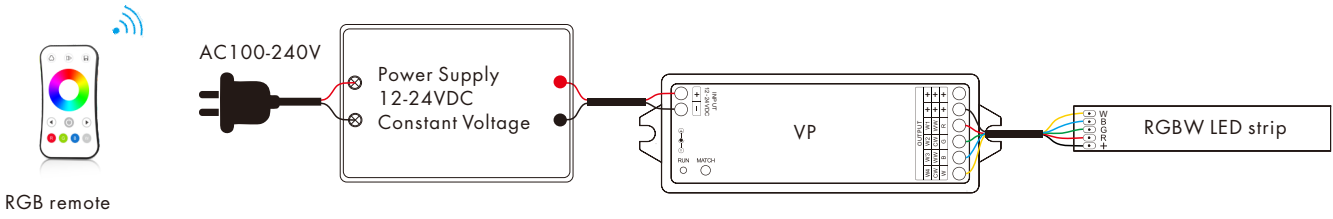
Delete:
Switch off the power of the receiver, then switch on power, repeat again. Immediately short press on/off key (single zone remote) or zone key (multiple zone remote) 5 times on the remote.
The light blinks 5 times means all matched remotes were deleted.

Light on/off fade time

Long press match key 5s, then short press match key 3 times, the light on/off time will be set to 3s, the indicator light blink 3 times.
Long press match key 10s, restore factory default parameter, the light on/off time also restore to 0.5s.

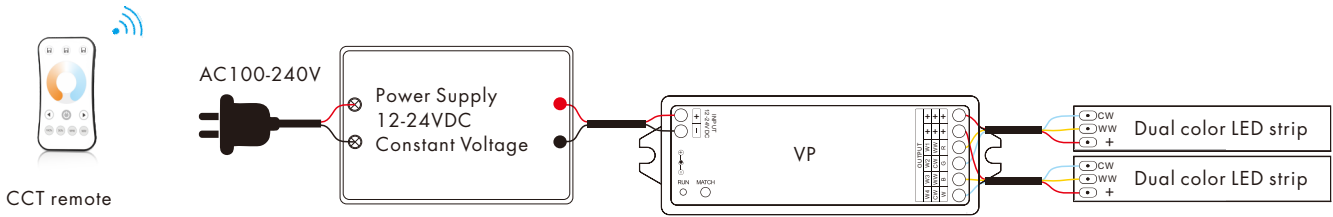
Wiring Diagram

• VP for RGB/RGBW

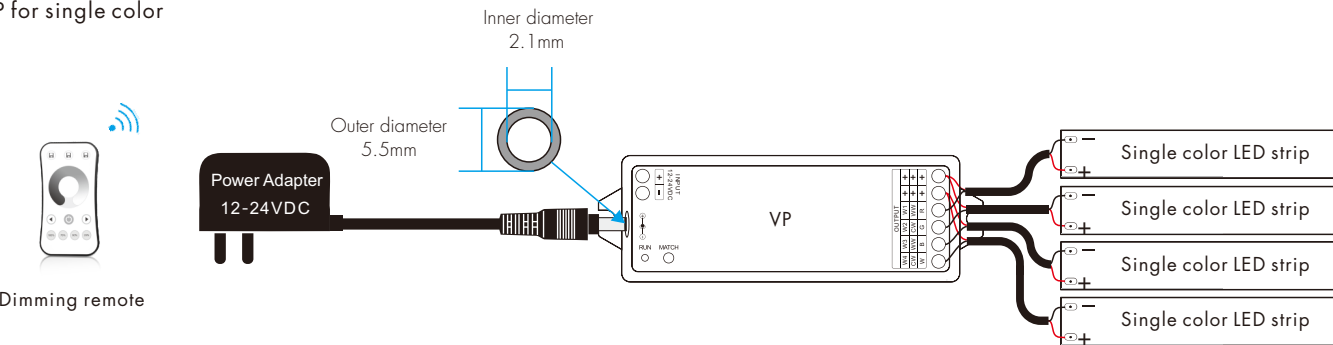


Note: If connect with RGB LED strip, please long press match key for 15s, the controller will become RGB type (Long press match key for 10s, the controller will restore RGBW type).

• VP for dual color



• VP for single color



Note: User can connect constant voltage power supply or power adapter as power input.

RGB/RGBW Dynamic mode list

No.	Name	No.	Name
1	RGB jump	6	RGB fade in and out
2	RGB smooth	7	Red fade in and out
3	6 color jump	8	Green fade in and out
4	6 color smooth	9	Blue fade in and out
5	Yellow cyan purple smooth	10	White fade in and out

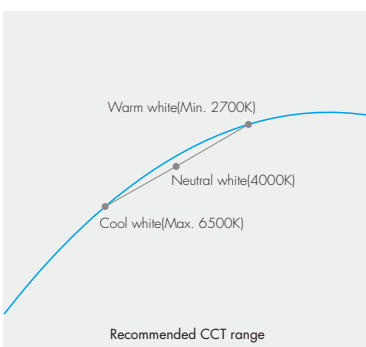
Dual color control

CH1,CH3=Warm white LED
 CH2,CH4=Cool white LED
 Each channel can supply up to 96W(@24V) and white balance can be controlled as such:

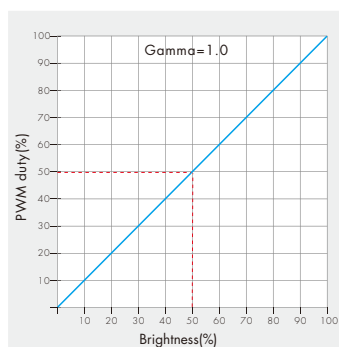
Color temperature	Cool white	Neutral white	Warm white
Power distribution	CH1=0W,CH2=96W CH3=0W,CH4=96W	CH1=48W,CH2=48W CH3=48W,CH4=48W	CH1=96W,CH2=0W CH3=96W,CH4=0W

Dimming curve

Linear dual color tuning



Dimming curve for CCT



Dimming curve for RGBW/RGB/DIM

