

T1, T2, T3, T4

Wall Mounted Touch Panel

RF DIM/CCT/RGB/RGBW



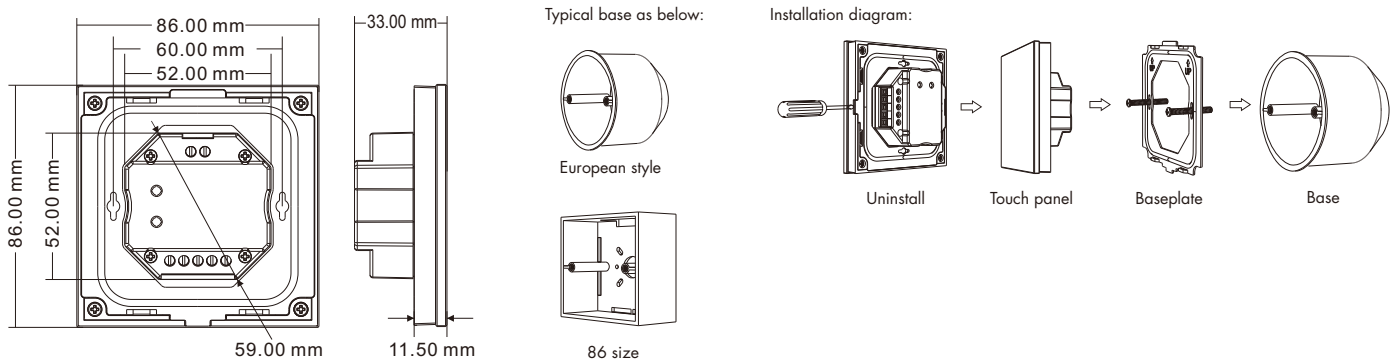
- Touch panel single color, dual color, RGB or RGBW PWM constant voltage controller.
- Ultra sensitive high strength glass touch panel with touch color wheel in the middle and backlighting.
- Compatibility with RF 2.4G single zone or multiple zone remote control.
- White & Black glass panel available.

CE RoHS RED

Technical Parameters

Input and Output					Safety and EMC	
Model No.	T1	T2	T3	T4	EMC standard	EN 62479:2010 ETSI EN 301 489-1 V2.2.3 ETSI EN 301 489-17 V3.2.4
Input voltage	12-48VDC	12-48VDC	12-24VDC	12-24VDC	Safety standard	EN 61347-1:2015+A1:2021 EN 61347-2-13:2014+A1:2017
Input current	10.5A	10.5A	12.5A	12.5A	Radio Equipment	ETSI EN 300 328 V2.2.2
Output voltage	2 x (12-48)VDC	2 x (12-48)VDC	3 x (12-24)VDC	4 x (12-24)VDC	Certification	CE RED
Output current	2CH, 5A/CH@12-24V 3A/CH@36-48V	2CH, 5A/CH@12-24V 3A/CH@36-48V	3CH,4A/CH	4CH,3A/CH	Environment	
Output power	120-288W	120-288W	144-288W	144-288W	Operation temperature	Ta: -30°C ~ +55°C
Output type	Constant voltage	Constant voltage	Constant voltage	Constant voltage	Case temperature (Max.)	Tc: +85°C
PWM frequency	1K/2K/8K/16KHz	2K/8KHz	1KHz	1KHz	Package	
Light type	Single color	Dual color	RGB	RGBW	Size	L112 x W112 x H50mm
					Gross weight	0.230kg

Mechanical Structures and Installations



Match Remote Control (two match ways)

The touch panel controller can also match with the RF remote (optional).
End user can choose the suitable match/delete ways. Two options are offered for selection:

Use On/Off key

Match:

Turn on light, turn off, immediately press the On/Off key of the panel for 5s, then press on/off key (single zone remote) or zone key (multiple zone remote) of the RF remote within 5s.
The LED indicator fast flash 3 times means match is successful.

Delete:

Turn on light, turn off, immediately press the On/Off key of the panel for 10s, delete all matched RF remote.
The LED indicator fast flash 6 times means all matched remotes were deleted.

Use Power Restart

Match:

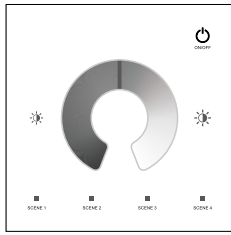
Switch off the power, then switch on power, repeat again, immediately short press on/off key (single zone remote) or zone key (multiple zone remote) 3 times on the remote.
The light blinks 3 times means match is successful.

Delete:

Switch off the power, then switch on power, repeat again, immediately short press on/off key (single zone remote) or zone key (multiple zone remote) 5 times on the remote.
The light blinks 5 times means all matched remotes were deleted.

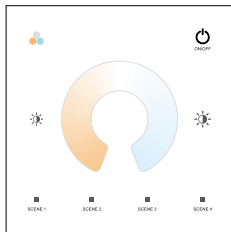
Key function

● T1 Single color panel



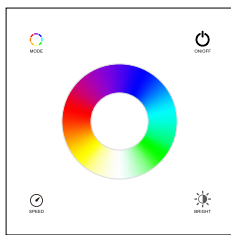
- Turn on/off light.
- Brightness wheel.
- Brightness+, 10 levels.
- Brightness-, 10 levels.
- 4 scenes, short press recall the scene, long press 5s save current brightness into scene 1/2/3/4.

● T2 Dual color panel



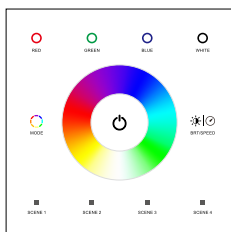
- Turn on/off light.
- Three color temperature switching (warm white, natural white, cool white)
- Brightness +, 10 levels.
- Brightness -, 10 levels.
- Color temperature wheel.
- 4 scenes, short press recall the scene, long press 5s save current brightness into scene 1/2/3/4.

● T3 RGB panel



- Turn on/off light.
- Color wheel.
- Brightness, 10 levels.
- Adjust dynamic mode speed, 10 levels.
- Short press play 10 built-in dynamic mode, long press 2s run mode-cycle.

● T4 RGBW panel



- Turn on/off light.
- Color wheel.
- Adjust dynamic mode speed or static color brightness, 10 levels.
- Short press play 10 built-in dynamic mode, long press 2s run mode-cycle.
- Short press get red, green, blue, white color, long press adjust each color brightness.
- 4 scenes, short press recall scene, long press 5s to save the current color into scene 1/2/3/4.

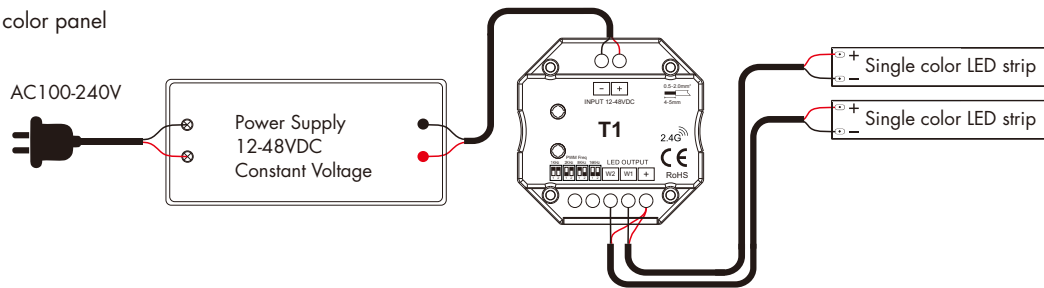
Note: After touch power key to turn off light, long press power key for 5 seconds will turn on or turn off tone(T1, T2 without key tone).

Scene locking:

- Scene keys can be set to locked state, cancel long press for 5 seconds to save the scene function (default scene is not locked).
- Short press the panel on/off key, turn on the light first, then turn off the light, immediately long press the panel on/off key for 5 seconds, then immediately long press any one scene key for 5 seconds to set all scene keys to locked state.
- Short press the panel on/off key, turn on the light first, then turn off the light, immediately long press the panel on/off key for 5 seconds, then immediately long press any one scene key for 10 seconds to restore all scene keys to unlocked state.

Wiring diagram

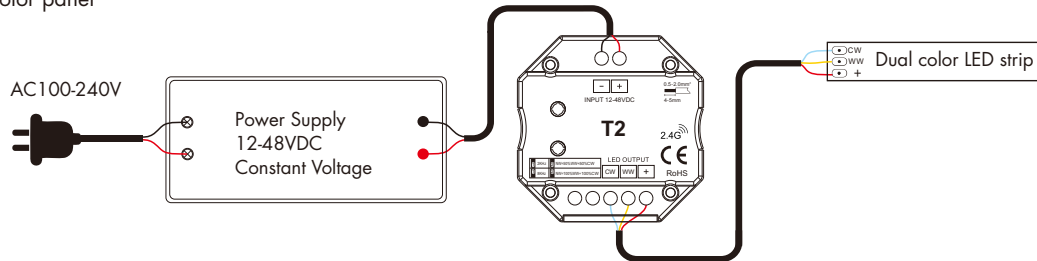
• T1 Single color panel



DIP switch select four PWM frequency: 1KHz, 2KHz, 8KHz or 16KHz.

Higher PWM frequency, will cause lower output current, higher power noise, but more suitable for camera(No flickers for video).

• T2 Dual color panel

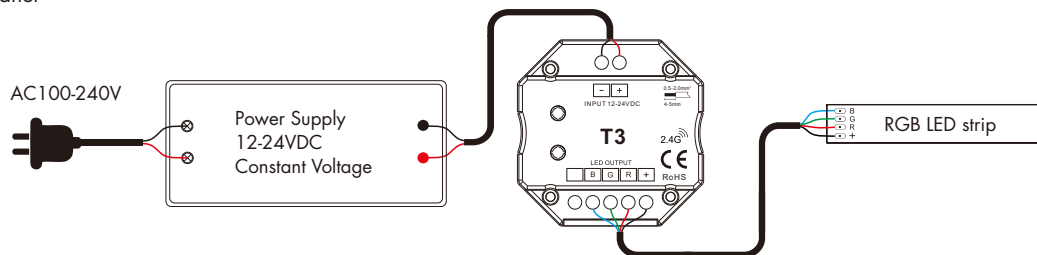


DIP switch 1 select two PWM frequency: 2KHz or 8KHz.

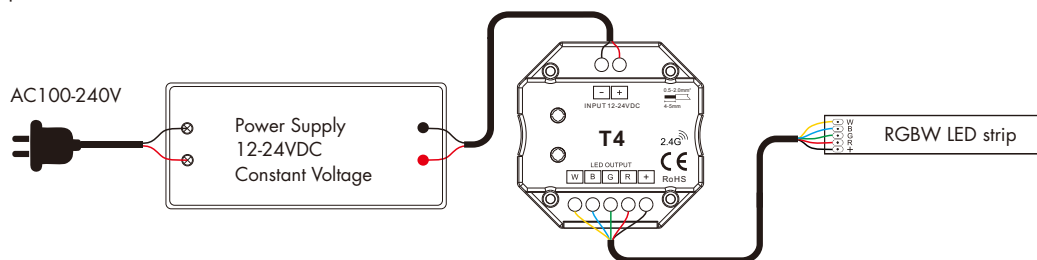
Higher PWM frequency, will cause lower output current, higher power noise, but more suitable for camera(No flickers for video).

DIP switch 2 select color temperature output mode: $NW=50\%WW+50\%CW$ or $NW=100\%WW+100\%CW$.

• T3 RGB panel



• T4 RGBW panel



RGB/RGBW dynamic mode list (only for T3 / T4)

No.	Name	No.	Name
1	RGB jump	6	RGB fade in and out
2	RGB smooth	7	Red fade in and out
3	ó color jump	8	Green fade in and out
4	ó color smooth	9	Blue fade in and out
5	Yellow cyan purple smooth	10	White fade in and out