

# MT-100-800-D1N1



## Non-dimmable Constant Current Driver

Special for magnetic & linear lamp



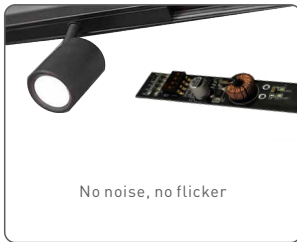
- No input polarity
- Multiple output current settings
- DC to DC constant current output
- Suitable for STUCCHI standard housings
- Magnetic installation is quiet without high-frequency sound
- Smooth dimming curves without flicker
- Overload, no-load and anti-reverse protection
- 5 year warranty

**Flicker-free**  
IEEE 1789

5-Year  
Warranty



**RoHS**



## Technical Specs

MODEL		MT-100-800-D1N1
OUTPUT	Output Voltage	9-46Vdc
	Output Voltage Range	12-48Vdc
	Output Current Range	100-800mA
	Output Power	0.9W-36.8W
	Channel	1
INPUT	Input Voltage	48Vdc±5% (No polarity)
	Input Current	0.74A
	Efficiency (Typ)	94%
	Standby Power	<0.5W
ENVIRONMENT	Working Temperature	ta: -30~60°C tc: 87°C
	Storage Temperature	-40~80°C
	Working Humidity	20~95%RH, non-condensing
PROTECTION	Overload Protection	When it exceeds the output voltage, the current will drop and automatically recover after reducing load.
	Anti-reverse Protection	Prevent driver and load damage.
OTHERS	Dimensions	L125xW14xH10mm
	Weight (G.W.)	15g±2g

## Output Current Selection

\* Please select the current through DIP switches on the circuit board when the power is off.

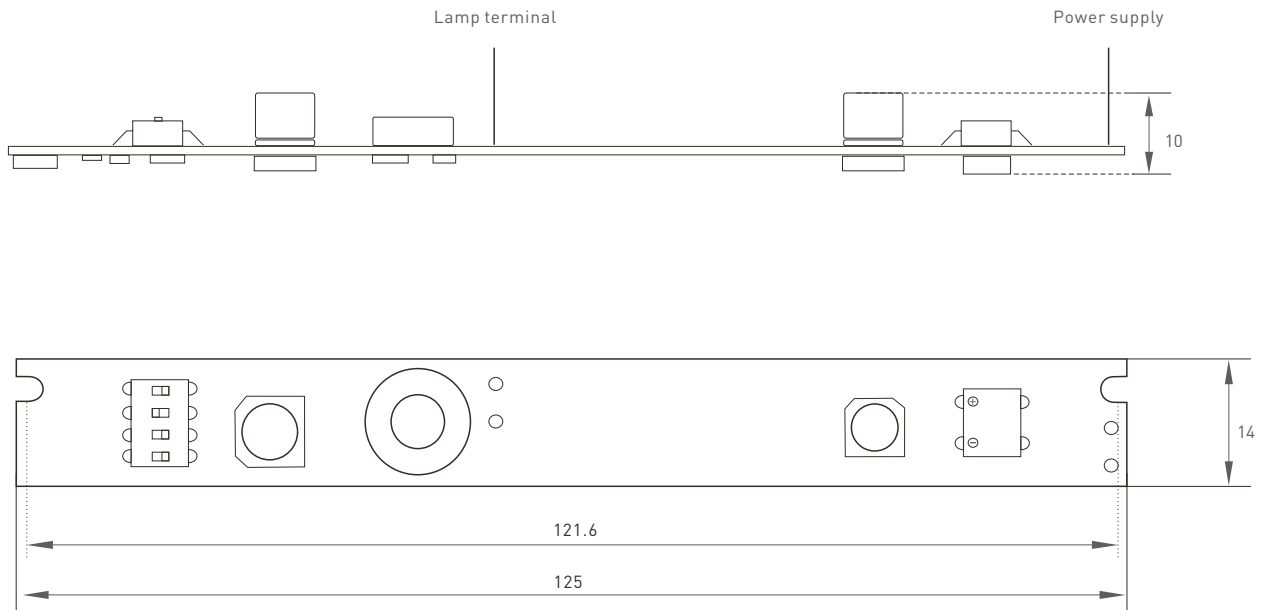


DIP switches quickly select current value from 100mA to 800mA.

DIP Switch								—	
Output Current	100mA	150mA	200mA	250mA	300mA	350mA	400mA	—	
Output Voltage	9-46V	9-46V	9-46V	9-46V	9-46V	9-46V	9-46V	—	
Output Power	0.9-4.6W	1.35-6.9W	1.8-9.2W	2.25-11.5W	2.7-13.8W	3.15-16.1W	3.6-16.8W	—	
DIP Switch									
Output Current	450mA	500mA	550mA	600mA	650mA	700mA	750mA	800mA	
Output Voltage	9-46V	9-46V	9-46V	9-46V	9-46V	9-46V	9-46V	9-46V	
Output Power	4.05-20.7W	4.5-23W	4.95-25.3W	5.4-27.6W	5.85-29.9W	6.3-32.2W	6.75-31.5W	7.2-36.8W	

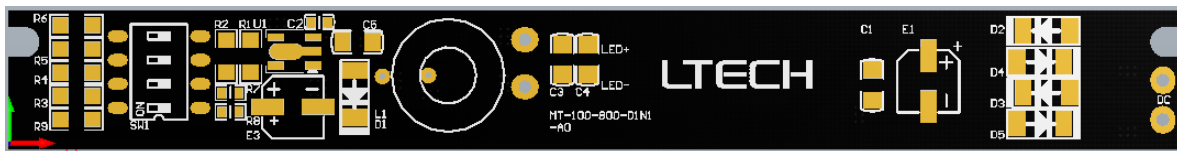
## Dimensions

Unit:mm

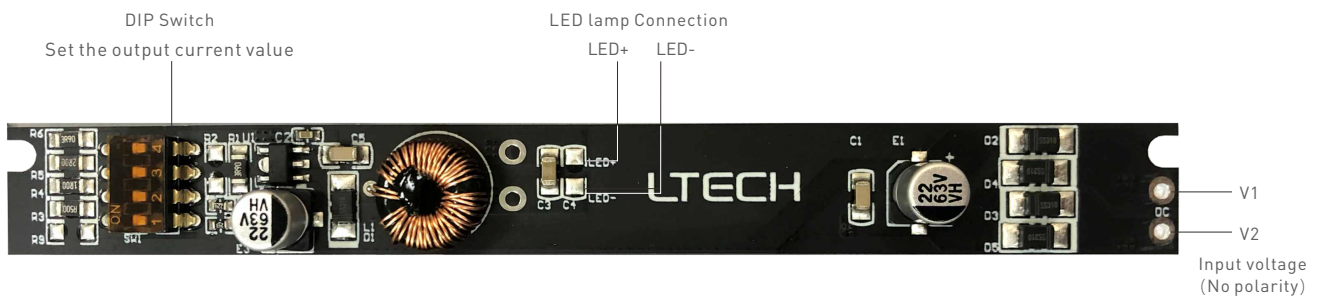


## Terminal Description

PCB board



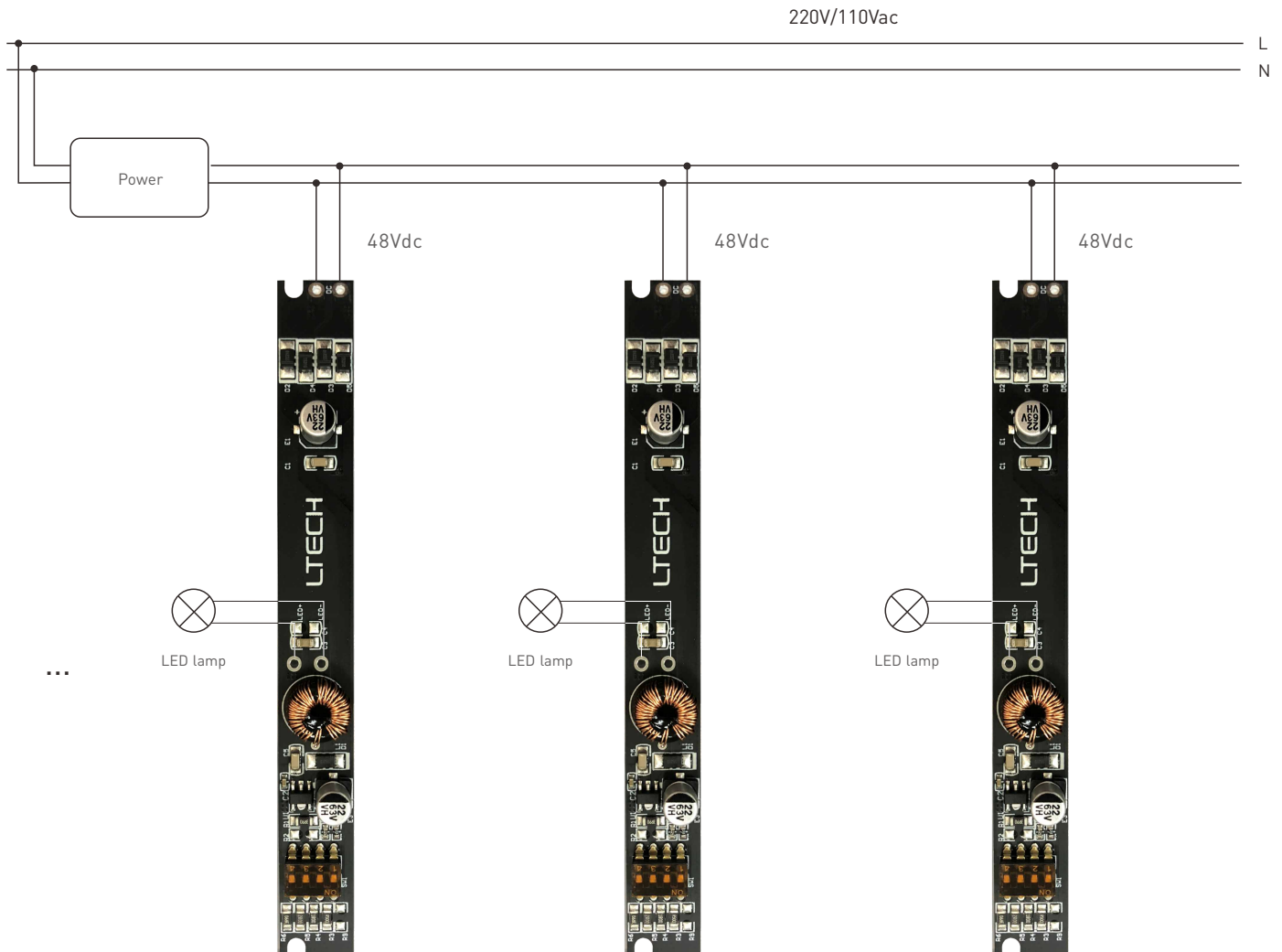
Main view



Side view



## Wiring Diagram



## Attentions

- Products shall be installed by qualified professionals.
- LTECH products are non-waterproof (special models excepted). Please avoid the sun and rain. When installed outdoors, please ensure it is mounted in a water proof enclosure.
- Good heat dissipation will extend the working life of products. Please ensure good ventilation.
- Please check if the working voltage used complies with the parameter requirements of products.
- The diameter of wire used must be able to load the light fixtures you connect and ensure the firm wiring.
- Before you power on products, please make sure all the wiring is correct in case of incorrect connection that causes damage to light fixtures.
- If a fault occurs, please do not attempt to fix products by yourself. If you have any question, please contact your suppliers.

\* This manual is subject to changes without further notice. Product functions depend on the goods. Please feel free to contact our official distributors if you have any question.

## Warranty Agreement

- Warranty periods from the date of delivery : 5 years.
- Free repair or replacement services for quality problems are provided within warranty periods.

### Warranty exclusions below:

- Beyond warranty periods.
- Any artificial damage caused by high voltage, overload, or improper operations.
- Products with severe physical damage.
- Damage caused by natural disasters and force majeure.
- Warranty labels and barcodes have been damaged.
- No any contract signed by LTECH.

1. Repair or replacement provided is the only remedy for customers. LTECH is not liable for any incidental or consequential damage unless it is within the law.
2. LTECH has the right to amend or adjust the terms of this warranty, and release in written form shall prevail.

## Update Log

Version	Updated Time	Update Content	Updated by
A0	2021.06.10	Original version	Xu Shujun
A1	2021.09.08	Deleted the description of "Current Accuracy" on P1 .Deleted the description of "The Output Current Accuracy of DIP Switches" on P1.	Xu Shujun
A2	2022.01.20	Added "Output Voltage" to P1 .	Xu Shujun
A3	2022.06.01	Added "tc: 87 °C" to P1.	Xu Shujun