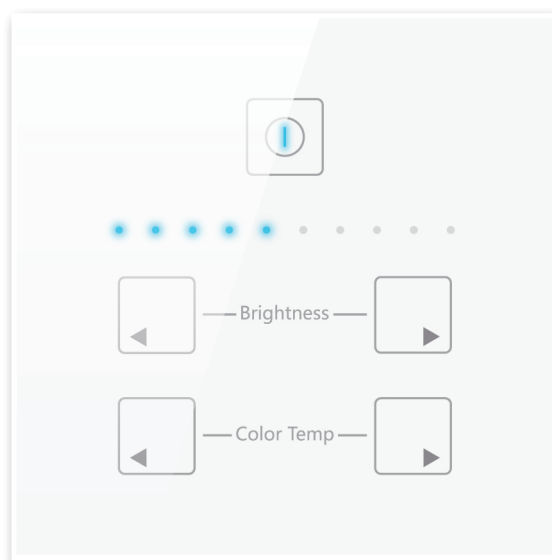


Walldim202

Multi-function Touch Panel Controller



Summary

Walldim202 is one of our high-end, multi-function Walldim touch panel controller series, with characteristic of fashionable and beautiful appearance, complete functions, easy operations, sensitive key touch, 0-10V signal controller and various forms. It is mainly used to connect LED 0-10V DIM controller. It can realize 0-10V smooth dimming according to different requirements.

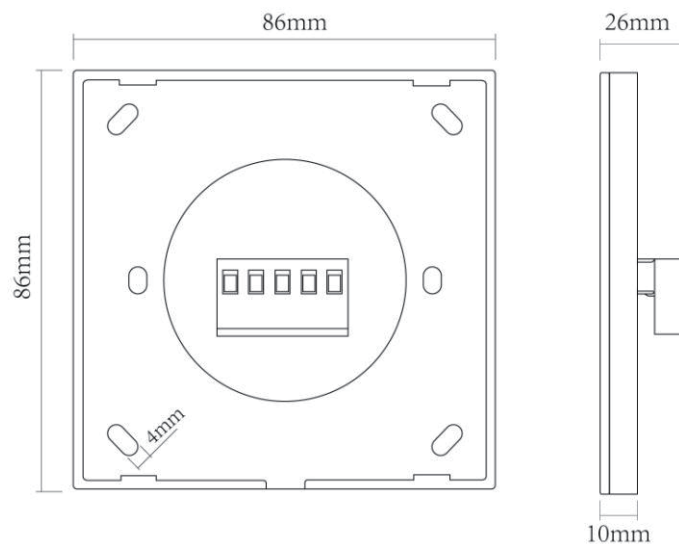
Product Features

- Supply voltage of 12-15VDC
- Output 2 channels 0-10V analog dimming signal
- Can adjust brightness and color temperature of lamps
- Show the current brightness or color grades
- can be installed in compliance with DIN 49073 and 86 standard wall box
- Fashion, and easy to use

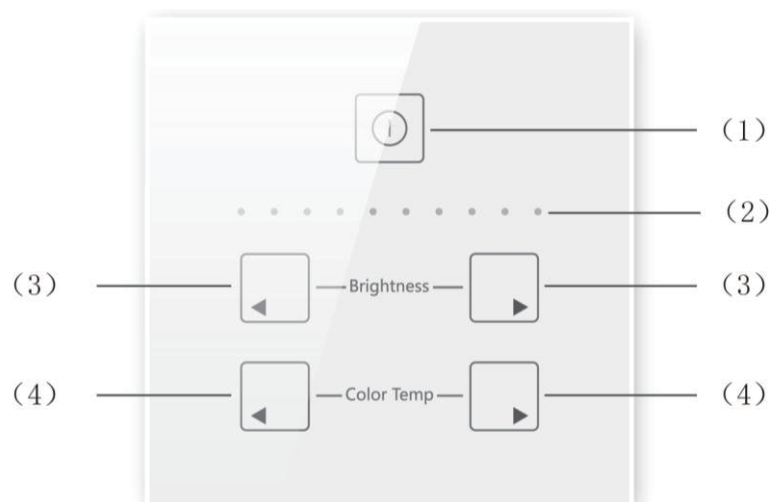
Technical Parameters

Model		Walldim202
Output	Voltage	0-10VDC
	Current	50mA*2ch
	Channels	2
Input	Voltage	12V-15VDC
	Standby power	< 1W
Others	Dimension	86*86*26 mm (L*W*H)
	Packing size	145*145*48mm (L*W*H)
	N.W.	105g
	G.W	140g
	Working temp.	-10°C ~ 40°C
	Relative humidity	20~90% RH

Dimension (mm)



Function Description

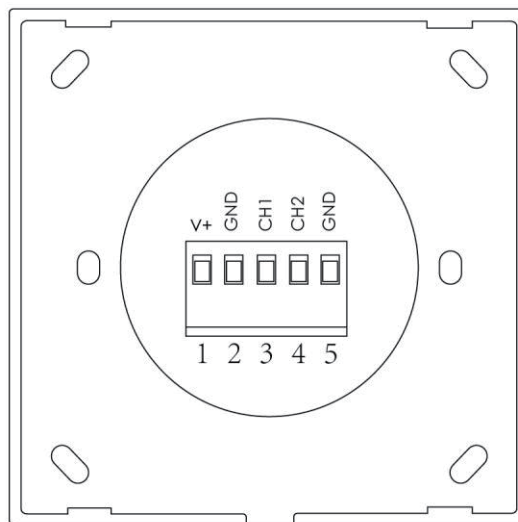


- (1) **ON/ OFF:** Short press the button to turn on or turn off the panel controller , when turn off 0-10V signal , Indicator light output minimum brightness; press the button for 5s and more to turn on or off the key tone
- (2) **Indicator light:** Show the current brightness or color temperature.
- (3) **Brightness+/Brightness-:** Adjust the LED lights brightness. Press and hold to adjust quickly.
- (4) **CCT+ /CCT-:** Adjust the LED lights color temperature. Press and hold to adjust quickly.

Remark: If the user don't operate in 10s, indicator light will enter the minimum light condition until the next operation

Interface Introduction

- 1.Power Input: DC+
- 2.Power Input: DC-
- 3.Signal Output:CH1
- 4.Signal Output:CH2
- 5.Signal Output:GND



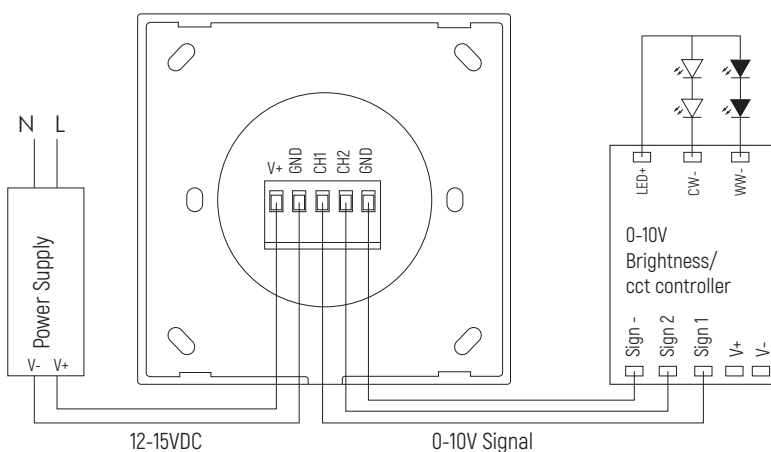
◆ Power input interface

DC 12-15V input, supply power for the controller it takes.

◆ Signal output interface

0-10V signal output can control LED 0-10V DIM controller.

Typical Application

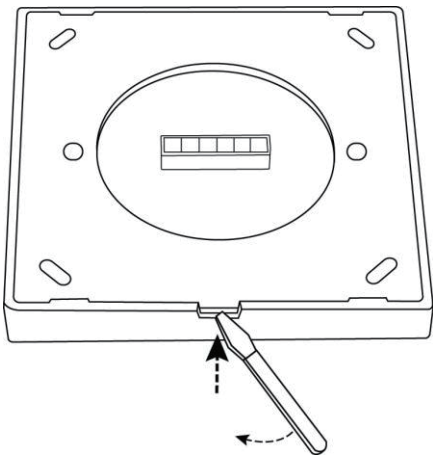


Installation Guide

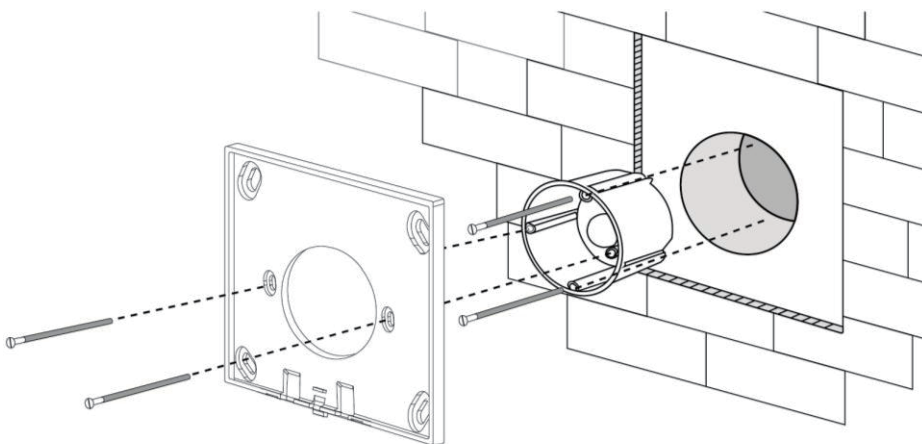
1. Mount an electrical box inside the wall.



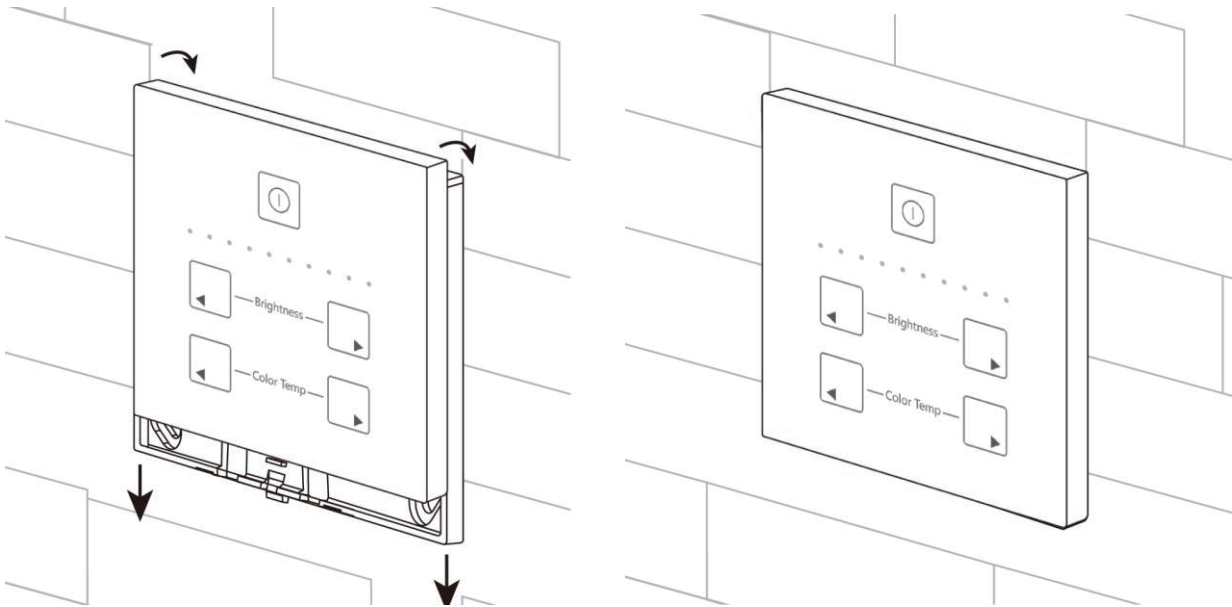
2. To separate the glass panel and the bottom box of the controller with a screwdriver along the gap of the bottom box.



3. To connect the output and power wires to the corresponding input and output terminal blocks on the behind of glass panel.
4. To lock the bottom box on the wall and fix it with the screwdriver.



5. To buckle the glass panel to the bottom box.



Remarks:

1. Connect the load wire at first, following by the power wire; Please ensure short circuit can't occur between connecting wire before you turn on the power.
2. Power supply voltage range is DC12-15V, more than voltage maybe will burnout the controller.

Walldim202

多功能触摸式玻璃面板控制器



概述

Walldim202是欧切斯设计的高端多功能触摸式玻璃面板控制器系列的产品之一，它具有界面时尚美观，功能齐全，简单易用，按键触摸灵敏等特点。它主要应用于连接 LED0- 10V 调光控制器或电源，可以根据不同的需求实现 0- 10V的平滑调光。

产品特点

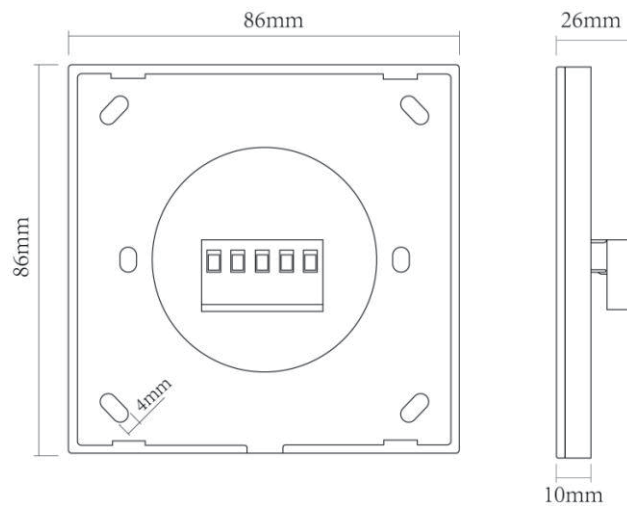
12V- 15VDC供电

- 输出两通道 0- 10V 模拟调光信号
- 可同时调节灯具的亮度和色温
- LED亮度条显示当前亮度或色温等级
- 可安装在 DIN 49073和国内标准 86 电气盒
- 界面时尚美观，简单易用

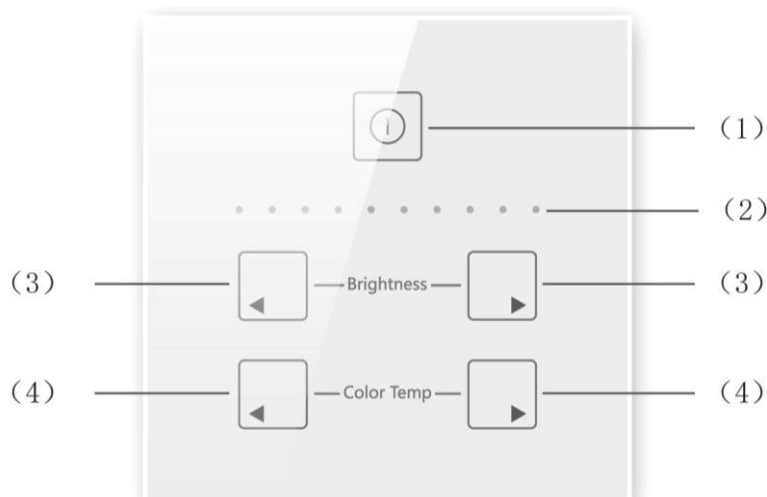
技术参数

型号		Walldim202
输出	电压	0- 10VDC
	电流	50mA*2通道
	通道	2
输入	电压	12- 15VDC
	空载功率	<1W
其它	产品尺寸	86*86*26mm (长*宽*高)
	包装尺寸	145*135*48 mm (长*宽*高)
	净重量	105克
	毛重量	140 克
	工作温度	-10°C ~ 40°C
	相对湿度	20~90% RH

外观尺寸(mm)



功能描述

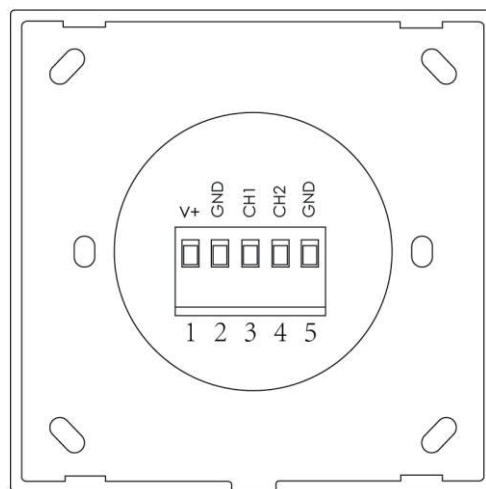


- (1) 开关：短按，打开或关闭面板输出，关闭面板输出时，指示灯输出最低亮度；长按 5s 以上打开或关闭按键音，
- (2) 指示灯：显示当前亮度或色温等级，
- (3) 亮度+/亮度-：调节 LED灯具亮度，长按可以快速调节
- (4) 色温+/色温-：调节 LED灯具色温，长按可以快速调节

注：若 10s 内没有对面板进行操作，指示灯将进入低亮状态；再次操作时亮度恢复

接口描述

- 1.电源输入: DC+
- 2.电源输入: DC-
- 3.信号输出:通道1
- 4.信号输出:通道2
- 5.信号输出:GND



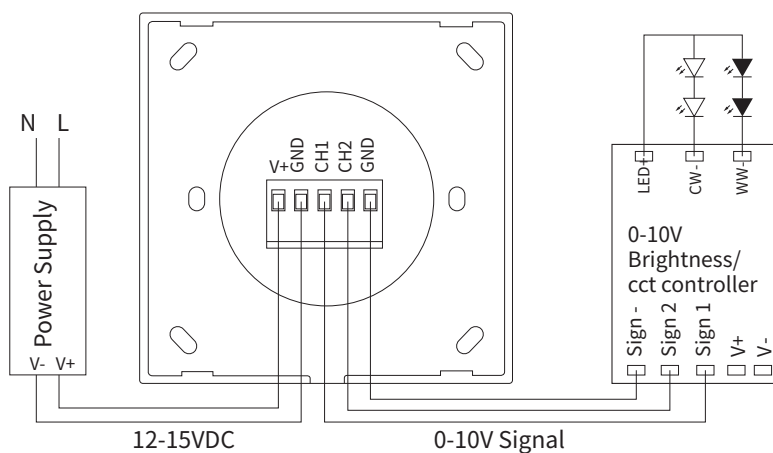
● 电源输入接口

直流 12-15V 输入，为面板供电

● 信号输出接口

两路 0-10V 模拟信号输出，分别控制两组 0-10V 调光控制器或调光电源

应用接线图

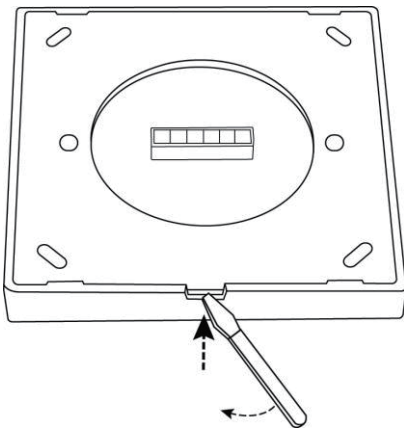


安装说明

1. 在墙体上安装电气盒

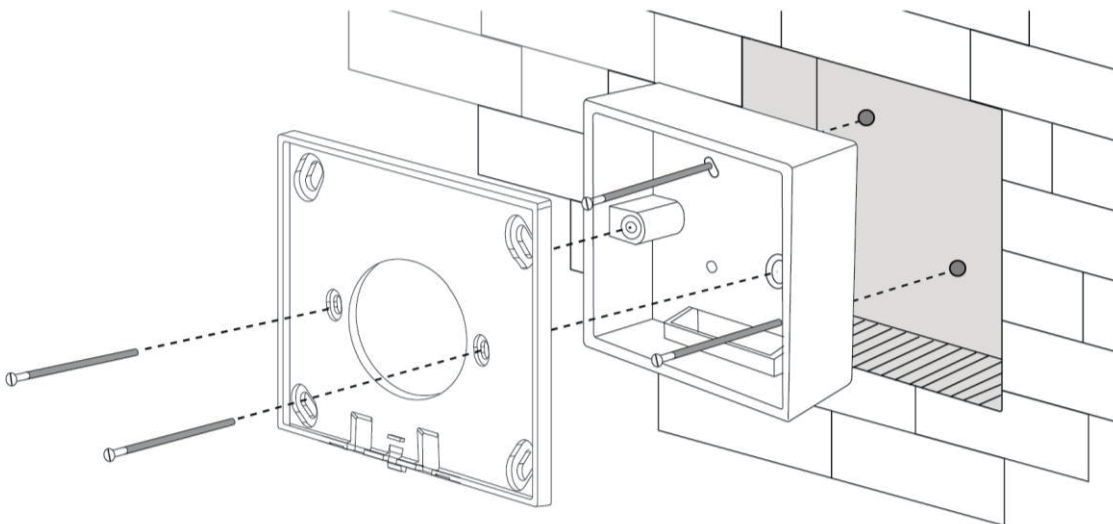


2. 如图所示用螺丝刀沿着后盖下方缺口的缝隙轻轻的撬开后盖

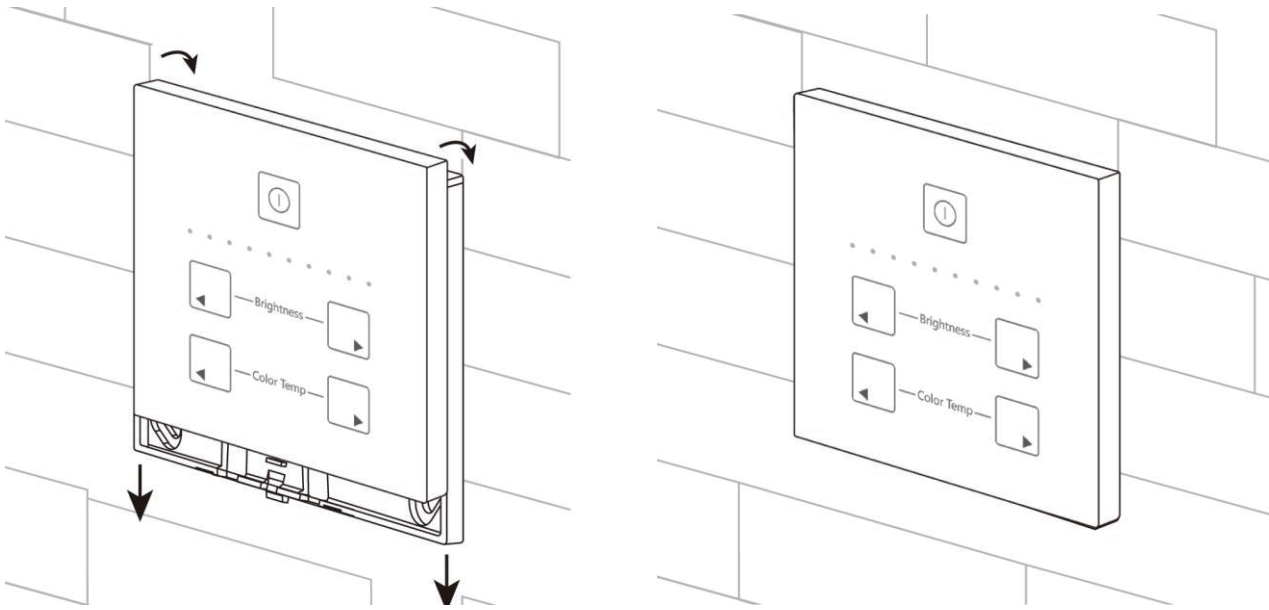


3. 将输出线和电源线依次连接在玻璃面板背面上相应的输入输出端

4. 如图所示，用螺钉将后盖嵌入电气盒内，以确保安装牢固



5. 将玻璃面板卡住后盖

**备注:**

1. 先连接灯具线，再连接电源线，请确保在打开电源前连接线之间不会发生短路。
2. 输入电压直流 12- 15V，超过这个电压值可能会烧掉控制器。