

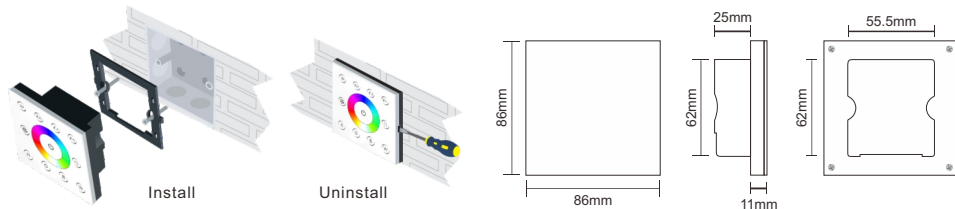
P8 RGBW Multi-zone touch panel



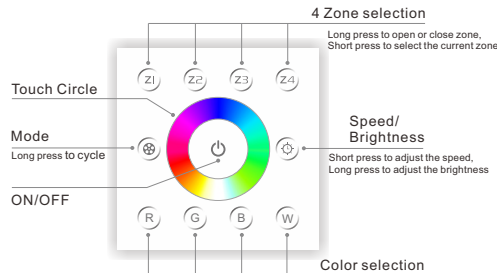
Technical Specs:

- Input Voltage: AC85V-265V
- Output Signal: DMX512 16 Channel
- Dimming Range: 5%-100%
- Working Temperature: -20°C~55°C
- Dimensions: L86×W86×H36(mm)
- Weight(N.W): 230g

Installation:



Key Functions:



- ✧ Long press to turn on/off the buzzer.
- ✧ Short press to call scene, long press to save scene.
- ✧ Hold the , keys for 2 second, the controller will restore default and restart automatically.
- ✧ RGBW MODE:

NO.	MODE	NO.	MODE
1	RGB CHANGE	2	COLOR CHANGE
3	WHITE FLASH	4	RGB FADE
5	COLOR FADE	6	RG FADE
7	RB FADE	8	GB FADE
9	WHITE FADE	10	ALL MODE CYCLE

Wiring Diagram:

