

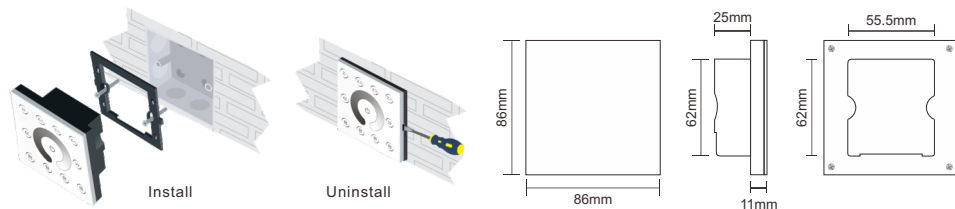
P5 Single color Multi-zone touch panel



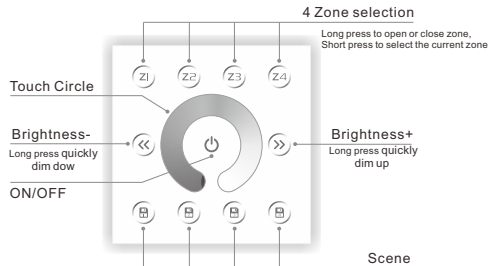
Technical Specs:

- Input Voltage: AC85V-265V
- Output Signal: DMX512 4 Channel
- Dimming Range: 5%-100%
- Working Temperature: -20°C~55°C
- Dimensions: L86×W86×H36(mm)
- Weight(N.W): 230g

Installation:



Key Functions:



- ※ Long press to turn on/off the buzzer.
- ※ Short press to call scene, long press to save scene.
- ※ Hold the , keys for 2 second, the controller will restore default and restart automatically.

Wiring Diagram:

