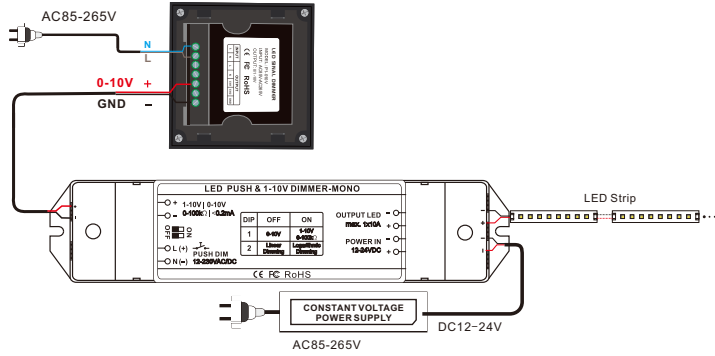


2. Diagram of 0-10V signal dimmer and 0-10V dimming driver:



✘ For the dimmer driver or dimming power which can be completely turned off only via dimming signal, can connect only the dimming signal of dimmer, without using other voltage output.

7. After-Sales

From the day you purchase our products within 3 years, if being used properly in accordance with the instruction, and quality problems occur, we provide free repair or replacement services except the following cases:

1. Any defects caused by wrong operations.
2. Any damages caused by inappropriate power supply or abnormal voltage.
3. Any damages caused by unauthorized removal, maintenance, modifying circuit, incorrect connections and replacing chips.
4. Any damages due to transportation, breaking, flooded water after the purchase.
5. Any damages caused by earthquake, fire, flood, lightning strike etc. force majeure of natural disasters.
6. Any damages caused by negligence, inappropriate storing at high temperature and humidity environment or near harmful chemicals.

LED Signal Dimmer User Manual



(Please read through this manual carefully before use)

1. Brief Introduction

This P series touch panel signal dimmer is AC85-265V input, and outputs AC85-265V, 0/1-10V analog signals、PWM5V and PWM10V signal. It can adjust the signals by touching panel. Easy to install, it's suitable for commercial or household standard 86 type socket base.

2. Specifications

Model	P1-010V	P1-PWM5V	P1-PWM10V
Input Voltage	AC85-265V		
Output Voltage	AC85-265V		
Max Output Current	10A		
Output Signal	0/1-10V Analog Signalx2CH	PWM5V Signalx2CH	PWM10V Signalx2CH
Max output signal current	20mA	40mA	40mA
Working Temp	-20°C-55°C		
Dimension	L86×W86×H36(mm)		
Weight(G.W)	190g		

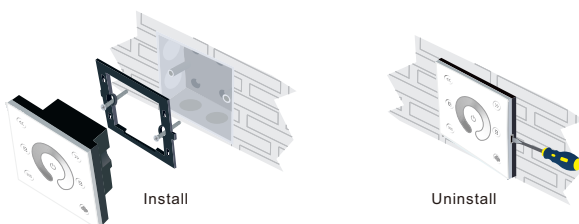
3. Basic Features

1. Automatically adapt to AC85-265V working voltage.
2. High voltage input, isolation power supply, can be used with dimming power.
3. Standard 86-style socket, easy to install.
4. Touch panel adjustment, fashion design, simple to use.
5. Two channels dimming signal output.
6. 25%, 50%, 75%, 100%, 4 brightness shortcuts and 2 DIY modes for fast dimming.
7. Power loss memory function.

4. Safety warnings

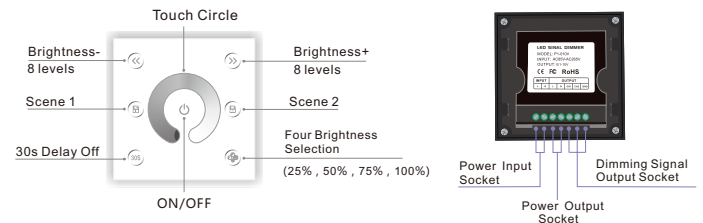
1. In order to use it properly and safety, please read user's manual carefully before installation.
2. Please don't install this controller in lightening, intense magnetic and high-voltage fields.
3. To reduce the risk of component damage and fire caused by short circuit, make sure correct connection
4. Always be sure to mount this unit in an area that will allow proper ventilation to ensure a fitting temperature.
5. Don't connect cables with power on; make sure a correct connection and no short circuit checked with instrument before power on.
6. Please don't open controller cover and operate if problems occur.  
The manual is only suitable for this model; any update is subject to change without prior notice.

5. Instructions



6. Operating instructions

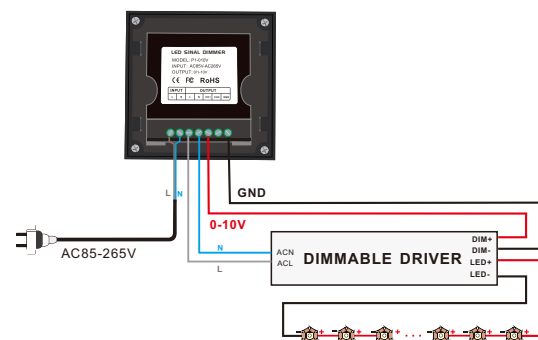
Key Functions:



- ✘ Long press to turn on/off the buzzer.
- ✘ Short press to call scene, long press to save scene.
- ✘ Short press four Brightness Selection, long press to switch the minimum output brightness of 0%, 10%, to cater for different dimming power.

Wiring instructions:

1. Diagram of 0-10V signal dimmer and dimmable driver:



✘ The dimmer will automatically cut off the output voltage when the brightness signal is 0%, and stop powering the dimming power. With this function, it can solve the problem that some dimmer power couldn't be turned off through dimmer signal.